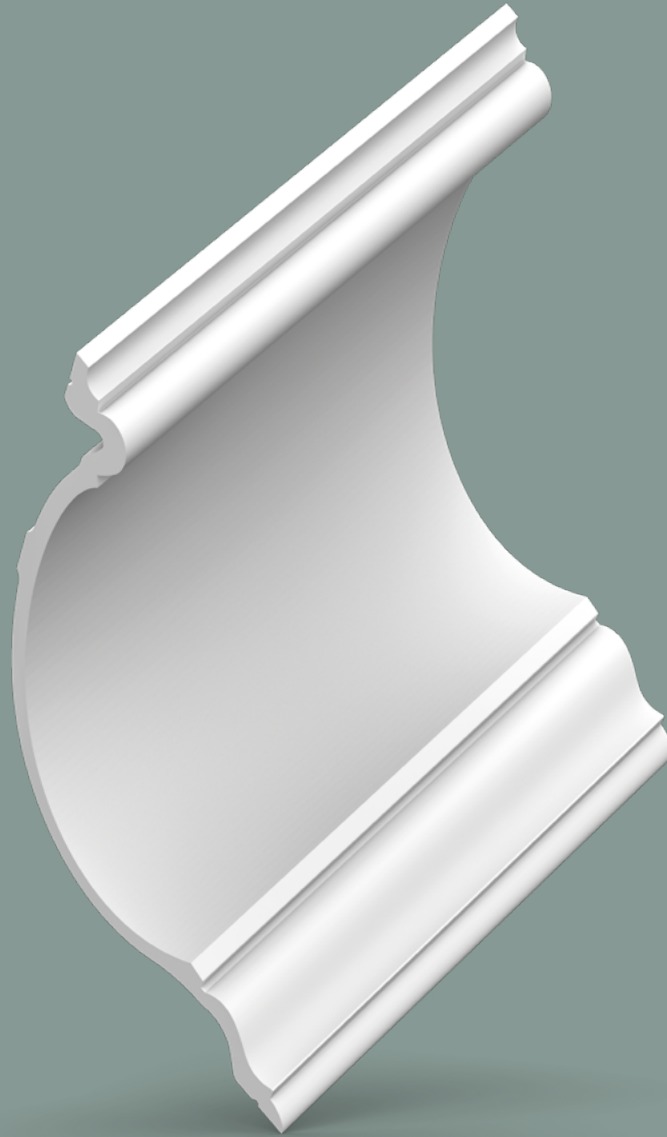


# INSTALLATION INSTRUCTIONS

## CROWN MOLDINGS

---



Ready? Set? Go!  
✓ INSTALLATION  
GUARANTEE

3 steps to the Perfect Finish

[WWW.ORACDECOR.COM](http://WWW.ORACDECOR.COM)

# 1 Ready?

## Preparation

### ATMOSPHERE & SURFACE



**Storage and installation conditions:**

For perfect ORAC installations ensure that the room temperature is at least 5°C/ 41° Fahrenheit or more. When products are installed in freezing conditions the adhesives will fail.



**Humidity:**

Should be between 40 – 70% for perfect installation.



**Decorating:**

Allow at least 24 hours before decorating your Orac Decor® products.



Dust free



Sand and wash surface



Flat walls & ceilings



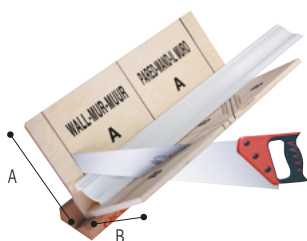
Dry surface



No grease

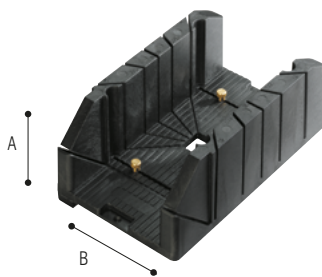
## Tools

### ACCESSORIES



**FB300 (+FB14)**

A: 29,7 cm - 11 11/16"  
B: 29,1 cm - 11 7/16"



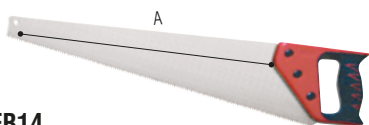
**FB13**

A: 12,5 cm - 4 15/16"  
B: 15,5 cm - 6 1/8"



**FB10 (+FB14 + FB15 + A38)**

A: 27,5 cm - 10 13/16"  
B: 22 cm - 8 11/16"



**FB14**

A: 60 cm - 23 5/8"

**Only available with FB300 or FB10 mitre blocks**



**FB15**



**A38**

## Sample service

Ready to mix-and-match? You can obtain your dream interior by combining different Orac Decor® products. Can't quite work it out or just not sure what your perfect match is? Then order a sample of your favorite products! **Simply search for a product of your liking and request the sample through our contact form:**

Product image: C392



[https://www.oracdecor.com/en\\_us/contact-us](https://www.oracdecor.com/en_us/contact-us)

**Order your sample**



2 Set?

# DecoFix adhesives



**DecoFix PRO**  
**FDP500** 310 ml / 10.5 oz  
 7 - 8 m / 23 - 26 ft  
**FDP600** 4200 ml / 142 oz  
 65 - 110 / 213 - 361 ft

**STRONG**  
 Purotouch® | Duropolymer® | Durofoam®

Interior Porous surface Dry surface

or

**DecoFix POWER**  
**FDP700** 290 ml / 9.8 oz  
 7 - 8 m / 23 - 26 ft

**ULTRA STRONG**  
 Purotouch® | Duropolymer® | Durofoam®

Heavy profiles Exterior Non-porous surface Humid surface

ONLY FULL WARRANTY WITH DECOFIX



DecoFix Glue Calculator

[https://www.oracdecor.com/en\\_us/glue-calculator](https://www.oracdecor.com/en_us/glue-calculator)

## FDP500 ADHESIVE SEAL WALL/CEILING

This adhesive must be used inside and on dry, porous surfaces

Strong installation adhesive for interior, porous and dry surfaces

- Strong, water-based acrylic glue
- Long-lasting seal between mouldings and the wall and/or ceiling
- Remove with humid sponge or cloth
- Should be kept frost free
- Paintable after hardening (min. 24 hours)
- Use DecoFix Extra for joints (Purotouch® + Duropolymer®)

## FDP700 ULTRA STRONG ADHESIVE SEAL WALL/CEILING

This adhesive can be used on new build, exterior and interior applications including bathrooms.

Extra strong MS polymer glue for new build, all exterior applications, non-porous (tiles, glass, ...) surfaces and damp environments

- Remove with soap solution
- Paintable after hardening (min. 24 hours)
- Use DecoFix Extra for joints (Purotouch® + Duropolymer®)



**DecoFix EXTRA**  
**FX200** 310 ml / 10.5 oz  
 80 m / 262 ft  
**FX210** 80 ml / 2.7 oz  
 20 m / 65 ft

**JOINTS**  
 Purotouch® | Duropolymer® | Durofoam®

Interior Exterior



## FX200 JOINT ADHESIVE GLUE MOULDINGS TOGETHER

Only full warranty on installations where FX200/FX210 is used on every mitre and end joint. Failure to use this adhesive may result in open joints which are very difficult to repair.

Polyurethane-based glue to join mouldings together

- Remove excess glue before hardening (max. 1 hour and repeat after 2-3 hours)
- Clean with acetone or synthetic thinner
- Can be painted after 24 hrs
- The more humidity, the faster the drying time

\* Durofoam®: use DecoFix Pro or DecoFix Power for joints



**DecoFiller**  
**FL300** 310 ml / 10.5 oz  
 30 m / 98 ft

**FILLING & FINISHING**  
 Purotouch® | Duropolymer® | Durofoam®

Interior Shrinkfree Paintable

## FL300 FILLER

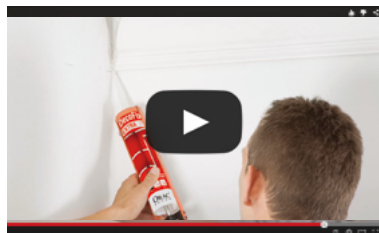
Use the FL300 filler to repair/smoothen out any unevenness in the installation or rectify small imperfections on the wall and ceiling where Orac Decor® mouldings are being installed. This product will not make a permanent repair whenever our FX200/FX210 joint adhesive has not been used.

Ready to use lightweight acrylic filler

- For shrink-proof finishing of gaps (between decorative profiles after adhesion, between wall and profiles, between walls and between wall and ceiling), cracks and irregularities in profiles or on walls
- Rapidly repaintable (after 15 min.)
- Does not crack

**3** Go!

# Installation of Crown moldings



ALSO AVAILABLE



Installation videos

[https://www.oracdecor.com/en\\_us/installation#video](https://www.oracdecor.com/en_us/installation#video)

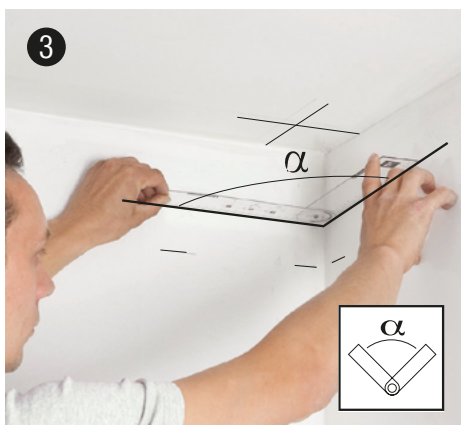
## MARK OUT INSTALLATION



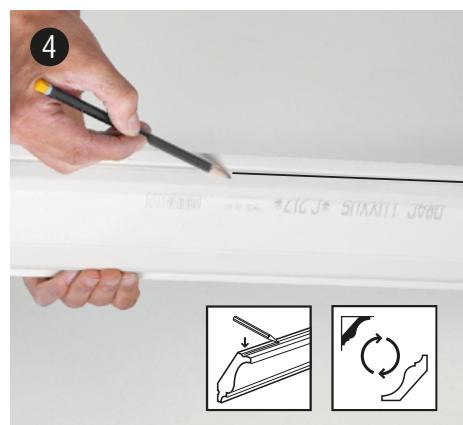
**Mark out** | Mark the bottom of the crown molding on the wall. Make sure the molding is positioned correctly at 90°.



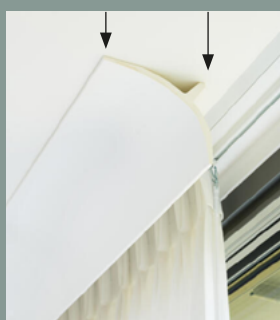
**Draw the miter angle on the coving** | to make sure you place the frame correctly in the miter box.



**Determine the angle** | Read the size of the angle using our protractor FB15.



**Marking the ceiling side** | Add a black line to the ceiling side of the coving. When cutting, place black line edge at bottom of mitre box! With other words, flip the molding.



## CURTAIN PROFILES (CROWN MOLDINGS)

Choice of over 10 classic and modern models.

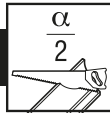
Each of these products can be securely fixed to the ceiling by providing two beads of DecoFix Power on the reverse of the profile. To avoid any product discoloration from UV light, we recommend that the exposed area of profile is decorated.

Interested? Have a look at all our CURTAIN profiles:

[https://www.oracdecor.com/en\\_us/crown-moldings/curtain-profiles](https://www.oracdecor.com/en_us/crown-moldings/curtain-profiles)

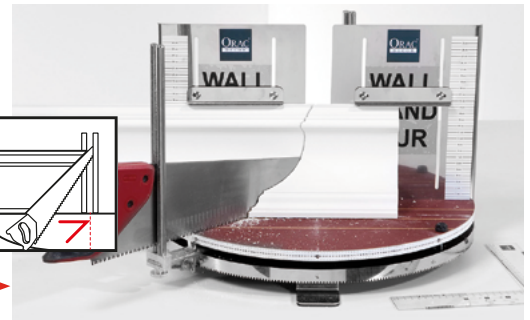
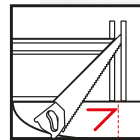
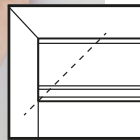
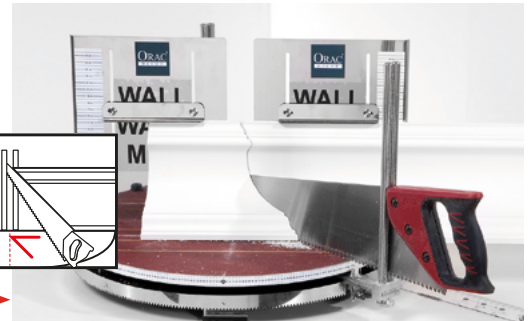
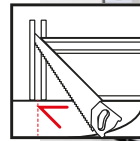
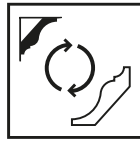
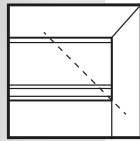
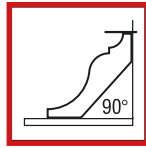


# MITRING

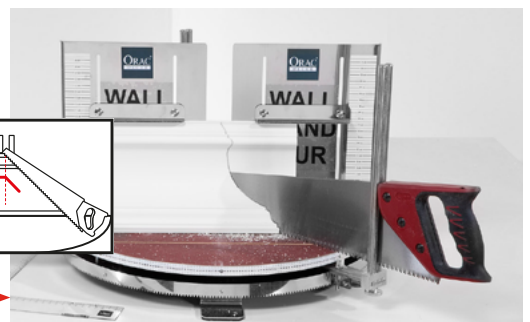
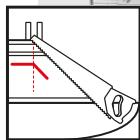
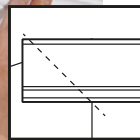
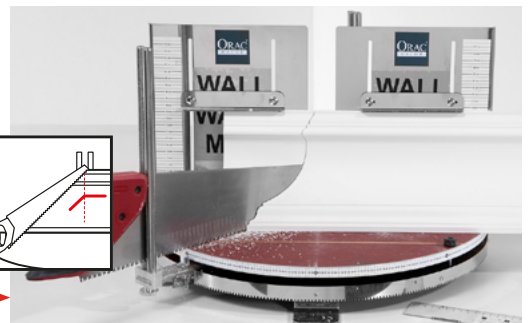
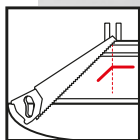
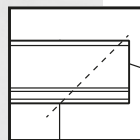
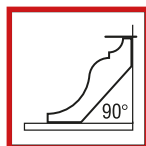


Always put the top edge of the crown molding onto the bottom of the mitre box (fig.4). With other words, flip the molding.

## 5a Inside corner

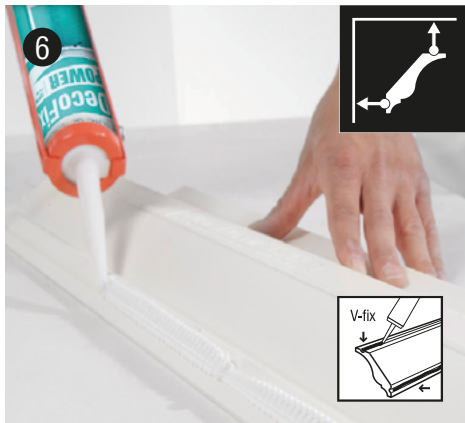


## 5b Outside corner





# POSITION AND FINISH OFF



**Apply DecoFix Pro or Power in V-Fix over the entire length** | To apply an adequate quantity of DecoFix Pro or Power (see page 3), first take a stanley knife and trim the nozzle at 45deg allowing an application of at least 8mm diameter of adhesive. Use the V groove on the back of most crown moldings to guide the nozzle as you apply adhesive. Note the V groove of the molding will not stick to the ceiling if adhesive is only hidden within the V groove, the adhesive must overspill the indentation to work.



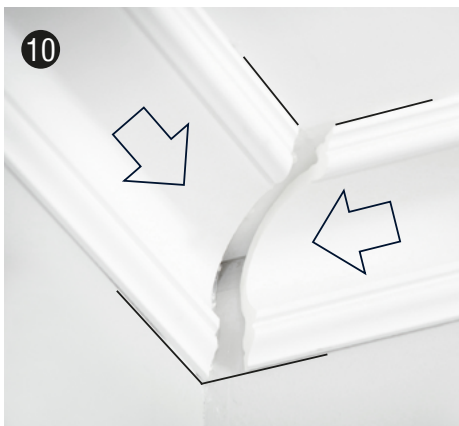
**Push firmly** | Ensure that you apply the marked edge to the ceiling. Put the crown molding into place, checking that it is horizontal and symmetrical to the wall and ceiling. When you are confident the molding is positioned correctly, firmly press it to the wall and ceiling across the entire length.



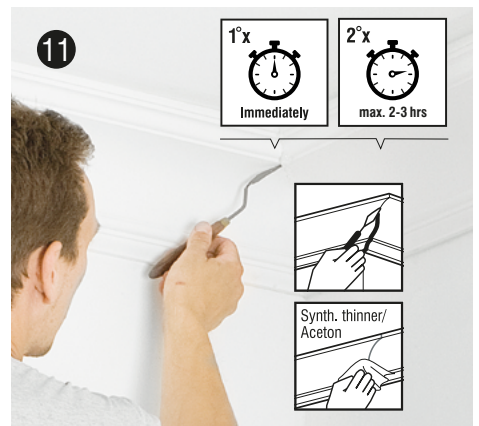
**Cleaning overspill** | Any overspill of DecoFix Pro can easily be removed with water. Any overspill of DecoFix Power can easily be removed with water and soap.



**Use DecoFix Extra on every joint** | Butter up each end with a complete covering of DecoFix Extra adhesive. Read safety instructions on cartridge.



**Push both moldings firmly and securely together.** Excess adhesive should seep through the joint.



**Clean** | Wipe off the residue immediately so that it is flush with the molding. You can repeat this process one hour later. Use a cloth dipped in pure acetone to remove adhesive residue.



**Use DecoFiller to smooth out all visible joints** | If there are minor irregularities on your molding and/or wall joints these can be filled with our FL300. You might find it easier to do this 24 hours after the initial installation.



**Prepare for paint** | All Orac Decor® moldings are pre-primed in white, but still need to be painted over with a suitable paint. For good adhesion, lightly rub the length of the moldings with a 320 gram sandpaper.



**Decorating** | Allow at least 24 hours before decorating your Orac Decor® products. For best results add an undercoat and top coat of paint. On new builds apply a mist coat and top coat the following day.