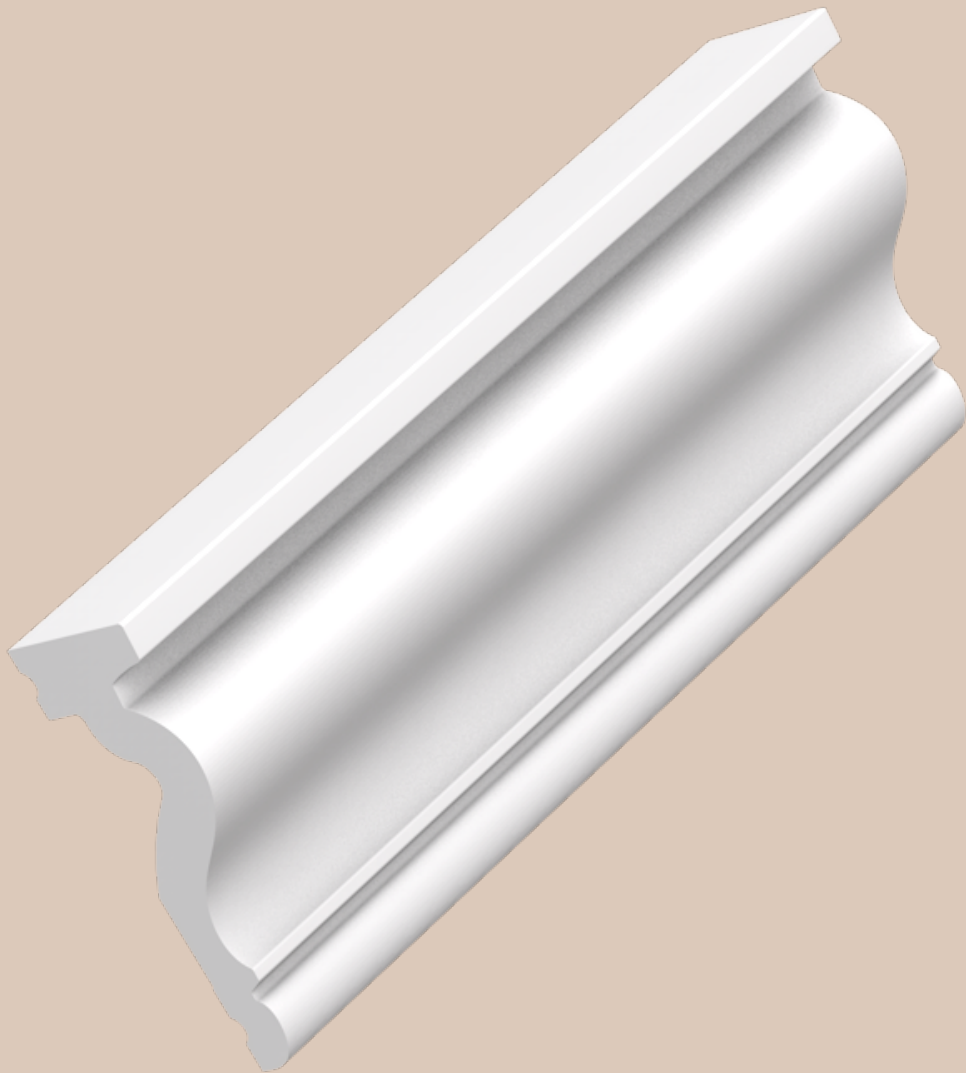


# INSTALLATION INSTRUCTIONS

## WALL MOLDINGS/PANELS

---



Ready? Set? Go!  
✓ INSTALLATION  
GUARANTEE

3 steps to the Perfect Finish

[WWW.ORACDECOR.COM](http://WWW.ORACDECOR.COM)

# 1 Ready?

## Preparation

### ATMOSPHERE & SURFACE



**Storage and installation conditions:**

For perfect ORAC installations ensure that the room temperature is at least 5°C/ 41° Fahrenheit or more. When products are installed in freezing conditions the adhesives will fail.



**Humidity:**

Should be between 40 – 70% for perfect installation.



**Decorating:**

Allow at least 24 hours before decorating your Orac Decor® products.



Dust free



Sand and wash surface



Flat walls & ceilings



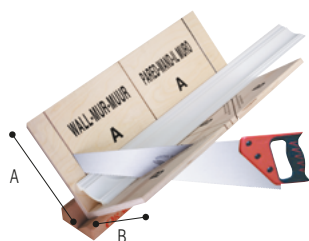
Dry surface



No grease

## Tools

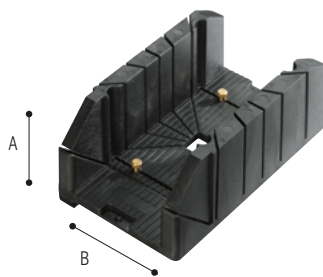
### ACCESSORIES



**FB300 (+FB14)**

A: 29,7 cm - 11 11/16"

B: 29,1 cm - 11 7/16"



**FB13**

A: 12,5 cm - 4 15/16"

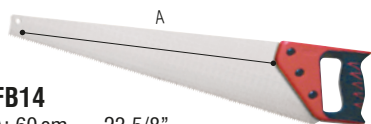
B: 15,5 cm - 6 1/8"



**FB10 (+FB14 + FB15 + A38)**

A: 27,5 cm - 10 13/16"

B: 22 cm - 8 11/16"



**FB14**

A: 60 cm - 23 5/8"

Only available with FB300 or FB10 mitre blocks



**FB15**



**A38**

## Sample service

Ready to mix-and-match? You can create your dream interior by combining different Orac Decor® products. Can't quite work it out or just not sure what your perfect match is? Then order a sample of your favorite products! Simply search for a product of your liking and request the sample through our contact form:

Product image: P3071



[https://www.oracdecor.com/en\\_us/contact-us](https://www.oracdecor.com/en_us/contact-us)

Order your sample



2 Set?

# DecoFix adhesives

ONLY FULL WARRANTY WITH DECOFIX



DecoFix Glue Calculator

[https://www.oracdecor.com/en\\_us/glue-calculator](https://www.oracdecor.com/en_us/glue-calculator)



**DecoFix PRO**

FDP500 310 ml / 10.5 oz  
7 - 8 m / 23 - 26 ft

FDP600 4200 ml / 142 oz  
65 - 110 / 213 - 361 ft

**STRONG**  
Purotouch® | Duropolymer® | Durofoam®




or

**DecoFix POWER**

FDP700 290 ml / 9.8 oz  
7 - 8 m / 23 - 26 ft

**ULTRA STRONG**  
Purotouch® | Duropolymer® | Durofoam®




## FDP500 ADHESIVE SEAL WALL/CEILING

This adhesive must be used inside and on dry, porous surfaces

Strong installation adhesive for interior, porous and dry surfaces

- Strong, water-based acrylic glue
- Long-lasting seal between mouldings and the wall and/or ceiling
- Remove with humid sponge or cloth
- Should be kept frost free
- Paintable after hardening (min. 24 hours)
- Use DecoFix Extra for joints (Purotouch® + Duropolymer®)

## FDP700 ULTRA STRONG ADHESIVE SEAL WALL/CEILING

This adhesive can be used on new build, exterior and interior applications including bathrooms.

Extra strong MS polymer glue for new build, all exterior applications, non-porous (tiles, glass, ...) surfaces and damp environments

- Remove with soap solution
- Paintable after hardening (min. 24 hours)
- Use DecoFix Extra for joints (Purotouch® + Duropolymer®)



**DecoFix EXTRA**

FX200 310 ml / 10.5 oz  
80 m / 262 ft

FX210 80 ml / 2.7 oz  
20 m / 65 ft

**JOINTS**  
Purotouch® | Duropolymer® | ~~Durofoam®~~




## FX200 JOINT ADHESIVE GLUE MOULDINGS TOGETHER

Only full warranty on installations where FX200/FX210 is used on every mitre and end joint. Failure to use this adhesive may result in open joints which are very difficult to repair.

Polyurethane-based glue to join mouldings together

- Remove excess glue before hardening (max. 1 hour and repeat after 2-3 hours)
- Clean with acetone or synthetic thinner
- Can be painted after 24 hrs
- The more humidity, the faster the drying time

\* Durofoam®: use DecoFix Pro or DecoFix Power for joints



**DecoFiller**

FL300 310 ml / 10.5 oz  
30 m / 98 ft

**FILLING & FINISHING**  
Purotouch® | Duropolymer® | Durofoam®




## FL300 FILLER

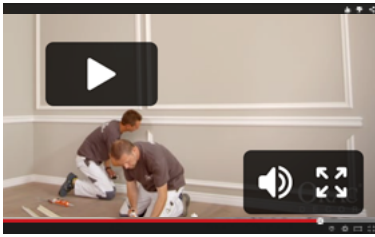
Use the FL300 filler to repair/smoothen out any unevenness in the installation or rectify small imperfections on the wall and ceiling where Orac Decor® mouldings are being installed. This product will not make a permanent repair whenever our FX200/FX210 joint adhesive has not been used.

Ready to use lightweight acrylic filler

- For shrink-proof finishing of gaps (between decorative profiles after adhesion, between wall and profiles, between walls and between wall and ceiling), cracks and irregularities in profiles or on walls
- Rapidly repaintable (after 15 min.)
- Does not crack

**3** Go!

# Install of wall moldings/panels

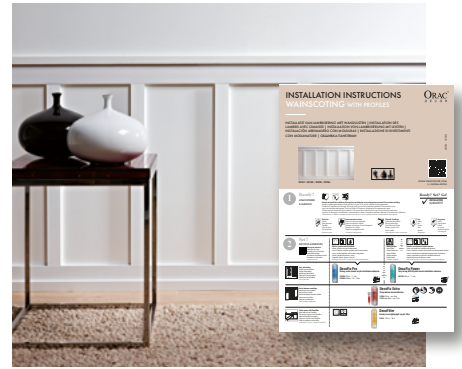


ALSO AVAILABLE



Installation videos

[https://www.oracdecor.com/en\\_us/installation#video](https://www.oracdecor.com/en_us/installation#video)



Wainscoting with  
(multifunctional) profiles

## Application examples



From simple and smooth ...



... to finely sculptured.  
We also offer various corner elements  
to create lovely wall frames



Many references are available in a  
flexible format for use on flat or curved  
surfaces



View our range of multifunctional moldings,  
which serve as cornice, wall molding  
and baseboard!



Combine with a wall panel to create a  
raised baseboard ...



... or similar on the ceiling



Combine with wall paper



... or be creative on the ceiling



Use wall moldings to decorate furniture

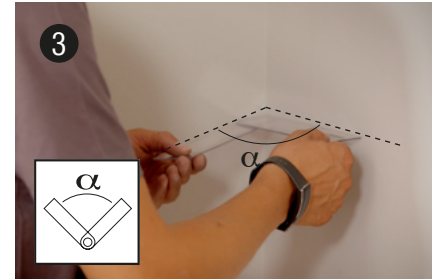
## MARK OUT INSTALLATION



**1** **Measure** | Measure the distances to wall/floor required.



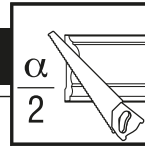
**2** **Mark out** | Mark out the lines with a spirit level.



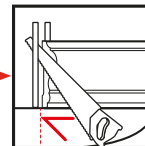
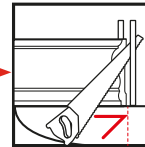
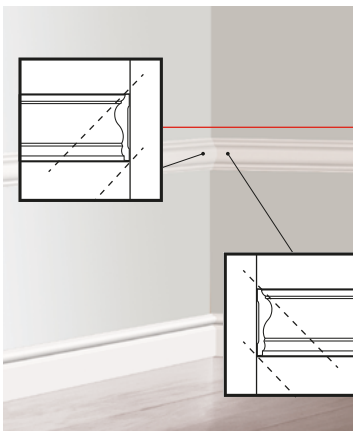
**3** **Determine the angle** | Read the size of the angle using our protractor FB15.



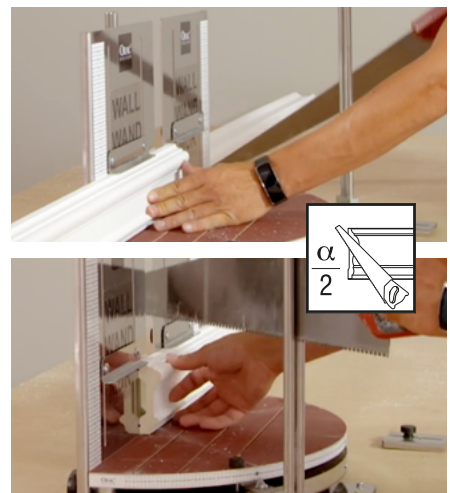
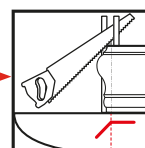
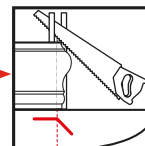
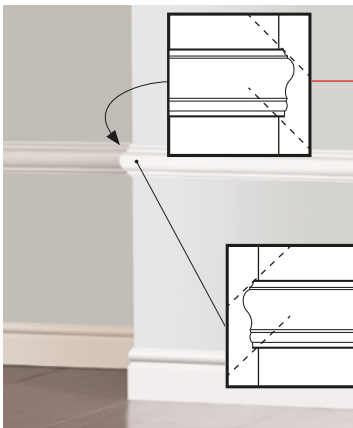
## MITRING



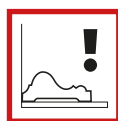
### 4a Inside corner



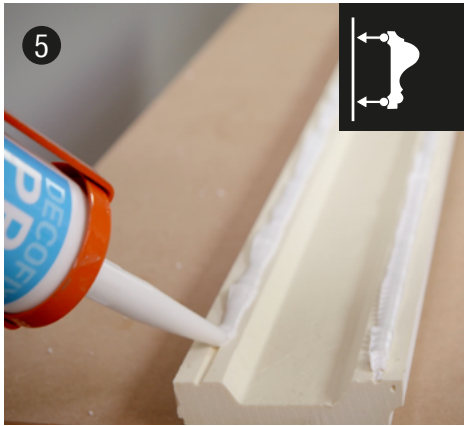
### 4b Outside corner



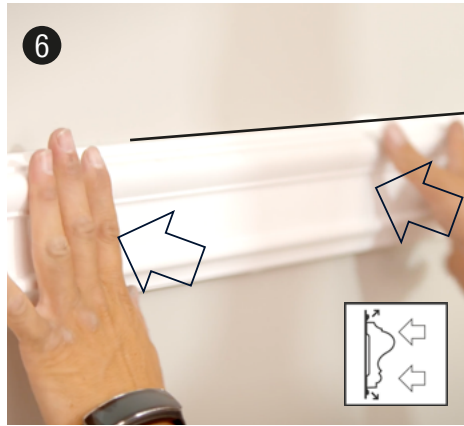
### 4c Frame



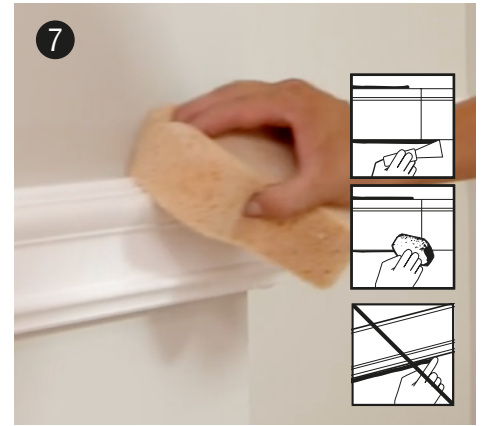
**POSITION AND FINISH OFF**



**Apply DecoFix Pro or Power in V-Fix over the entire length** | To apply an adequate quantity of DecoFix Pro or Power (see page 3), first take a stanley knife and trim the nozzle at 45deg allowing an application of at least 8mm diameter of adhesive. Use the V groove on the back of most moldings to guide the nozzle as you apply adhesive. Note the V groove will not stick if adhesive is only hidden within the V groove, the adhesive must overspill the indentation to work.



**Push firmly** | Put the baseboard into place, checking that it is horizontal. When you are confident the baseboard is positioned correctly, firmly press it to the wall across the entire length.



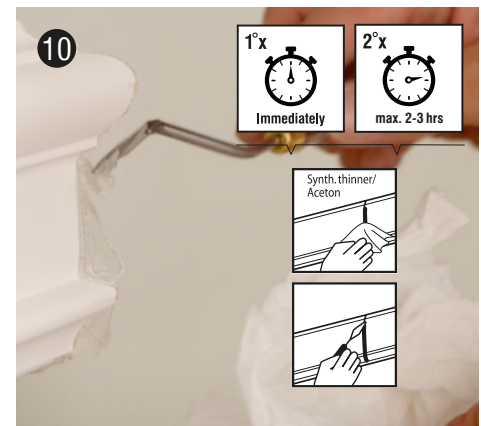
**Cleaning overspill** | Any overspill of DecoFix Pro can easily be removed with water. Any overspill of DecoFix Power can easily be removed with water and soap.



**Use DecoFix Extra on every joint** | Apply a generous amount of DecoFix Extra adhesive to each end of the molding and ensure both ends are completely covered. Read safety instructions on cartridge.



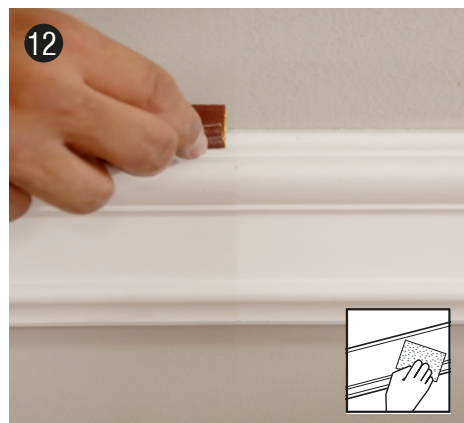
**Push firmly** and securely into the joint. The adhesive must come out all over the joint.



**Clean** | Wipe off the residue immediately so that it is flush with the molding. You can repeat this process one hour later. Use a cloth dipped in pure acetone to remove adhesive residue.



**Use DecoFiller to smooth out all visible joints** | If there are minor irregularities (on your wall) these can be filled with our FL300. You might find it easier to do this 24 hours after the initial installation.



**Prepare for paint** | All Orac Decor® moldings are pre-primed in white, but still need to be painted over with a suitable paint. For good adhesion, lightly rub the length of the moldings with a 320 gram sandpaper.



**Decorating** | Allow at least 24 hours before decorating your Orac Decor® products. For best results add an undercoat and top coat of paint. On new builds apply a mist coat and top coat the following day.