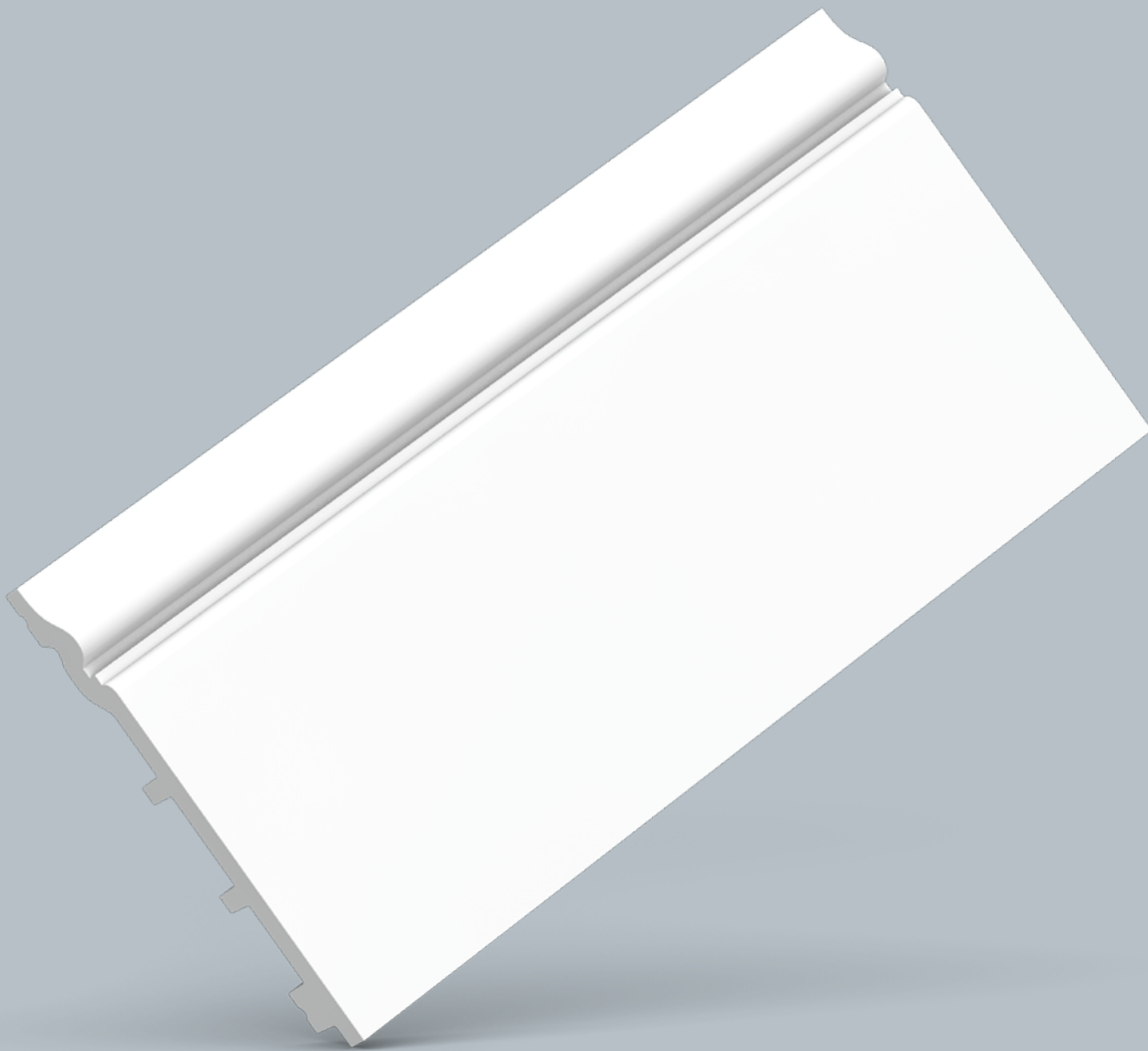


INSTALLATION INSTRUCTIONS

BASEBOARDS



Ready? Set? Go!
✓ INSTALLATION
GUARANTEE

3 steps to the Perfect Finish

WWW.ORACDECOR.COM

1 Ready?

Preparation

ATMOSPHERE & SURFACE



Storage and installation conditions:

For perfect ORAC installations ensure that the room temperature is at least 5°C/ 41° Fahrenheit or more. When products are installed in freezing conditions the adhesives will fail.



Humidity:

Should be between 40 – 70% for perfect installation.



Decorating:

Allow at least 24 hours before decorating your Orac Decor® products.



Dust free



Sand and wash surface



Flat walls & ceilings



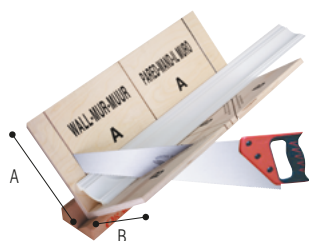
Dry surface



No grease

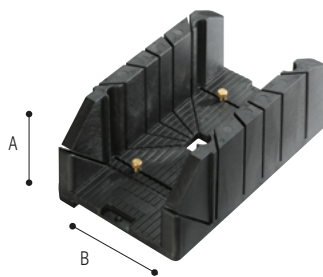
Tools

ACCESSORIES



FB300 (+FB14)

A: 29,7 cm - 11 11/16"
B: 29,1 cm - 11 7/16"



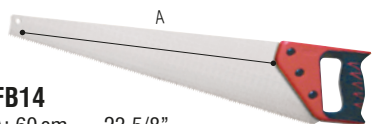
FB13

A: 12,5 cm - 4 15/16"
B: 15,5 cm - 6 1/8"



FB10 (+FB14 + FB15 + A38)

A: 27,5 cm - 10 13/16"
B: 22 cm - 8 11/16"



FB14

A: 60 cm - 23 5/8"

Only available with FB300 or FB10 mitre blocks



FB15



A38

Sample service

Ready to mix-and-match? You can obtain your dream interior by combining different Orac Decor® products. Can't quite work it out or just not sure what your perfect match is? Then order a sample of your favorite products! **Simply search for a product of your liking and request the sample through our contact form:**

Product image: SX118



https://www.oracdecor.com/en_us/contact-us

Order your sample



2 Set?

DecoFix adhesives



DecoFix PRO
FDP500 310 ml / 10.5 oz
 7 - 8 m / 23 - 26 ft
FDP600 4200 ml / 142 oz
 65 - 110 / 213 - 361 ft

STRONG
 Purotouch® | Duropolymer® | Durofoam®

Interior Porous surface Dry surface



or

DecoFix POWER
FDP700 290 ml / 9.8 oz
 7 - 8 m / 23 - 26 ft

ULTRA STRONG
 Purotouch® | Duropolymer® | Durofoam®

Heavy profiles Exterior Non-porous surface Humid surface



ONLY FULL WARRANTY WITH DECOFIX



DecoFix Glue Calculator

https://www.oracdecor.com/en_us/glue-calculator

FDP500 ADHESIVE SEAL WALL/CEILING

This adhesive must be used inside and on dry, porous surfaces

Strong installation adhesive for interior, porous and dry surfaces

- Strong, water-based acrylic glue
- Long-lasting seal between mouldings and the wall and/or ceiling
- Remove with humid sponge or cloth
- Should be kept frost free
- Paintable after hardening (min. 24 hours)
- Use DecoFix Extra for joints (Purotouch® + Duropolymer®)

FDP700 ULTRA STRONG ADHESIVE SEAL WALL/CEILING

This adhesive can be used on new build, exterior and interior applications including bathrooms.

Extra strong MS polymer glue for new build, all exterior applications, non-porous (tiles, glass, ...) surfaces and damp environments

- Remove with soap solution
- Paintable after hardening (min. 24 hours)
- Use DecoFix Extra for joints (Purotouch® + Duropolymer®)



DecoFix EXTRA
FX200 310 ml / 10.5 oz
 80 m / 262 ft
FX210 80 ml / 2.7 oz
 20 m / 65 ft

JOINTS
 Purotouch® | Duropolymer® | Durofoam®

Interior Exterior




FX200 JOINT ADHESIVE GLUE MOULDINGS TOGETHER

Only full warranty on installations where FX200/FX210 is used on every mitre and end joint. Failure to use this adhesive may result in open joints which are very difficult to repair.

Polyurethane-based glue to join mouldings together

- Remove excess glue before hardening (max. 1 hour and repeat after 2-3 hours)
- Clean with acetone or synthetic thinner
- Can be painted after 24 hrs
- The more humidity, the faster the drying time

* Durofoam®: use DecoFix Pro or DecoFix Power for joints



DecoFiller
FL300 310 ml / 10.5 oz
 30 m / 98 ft

FILLING & FINISHING
 Purotouch® | Duropolymer® | Durofoam®

Interior Shrinkfree Paintable



FL300 FILLER

Use the FL300 filler to repair/smoothen out any unevenness in the installation or rectify small imperfections on the wall and ceiling where Orac Decor® mouldings are being installed. This product will not make a permanent repair whenever our FX200/FX210 joint adhesive has not been used.

Ready to use lightweight acrylic filler

- For shrink-proof finishing of gaps (between decorative profiles after adhesion, between wall and profiles, between walls and between wall and ceiling), cracks and irregularities in profiles or on walls
- Rapidly repaintable (after 15 min.)
- Does not crack

3 Go!

ORAC DECOR[®] BASEBOARDS

Installation



Also available:
Installation videos

https://www.oracdecor.com/en_us/installation#video



Advantages

Duopolymer[®]

Extruded and impact-resistant high-density polystyrene mix



100% recyclable. No formaldehyde



100% water resistant, even in bathrooms



Shock resistant



Hides cables



Paintable



6 references with RAL9003 finishing



Very lightweight and easy to install

Application possibilities



Use baseboard to hide cables



Cover baseboard, ideal for renovation. Use DecoFix Power



Combine with a wall panel to create a raised baseboard ...



Indirect lighting for an added dimension



Many references are available in a flexible format for use on flat or curved surfaces



View our range of multifunctional moldings, which serve as cornice, wall molding and baseboard!

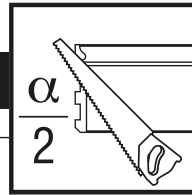
MARK OUT INSTALLATION



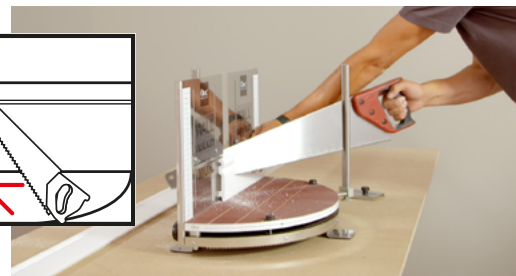
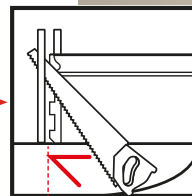
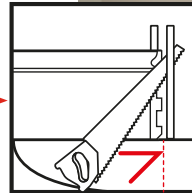
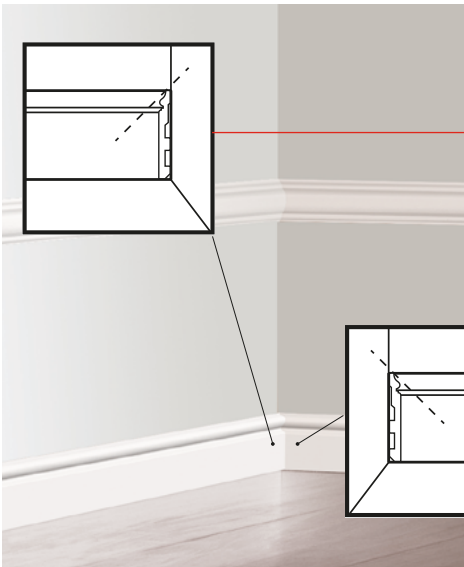
Determine the angle | Read the size of the angle using our protractor FB15.



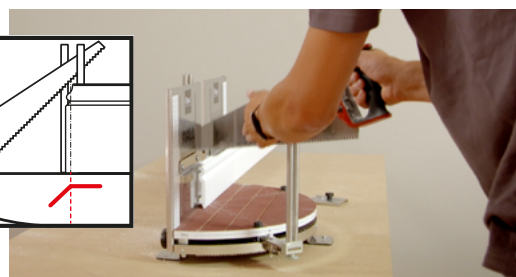
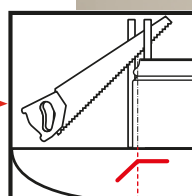
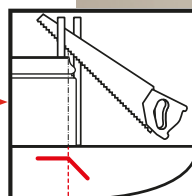
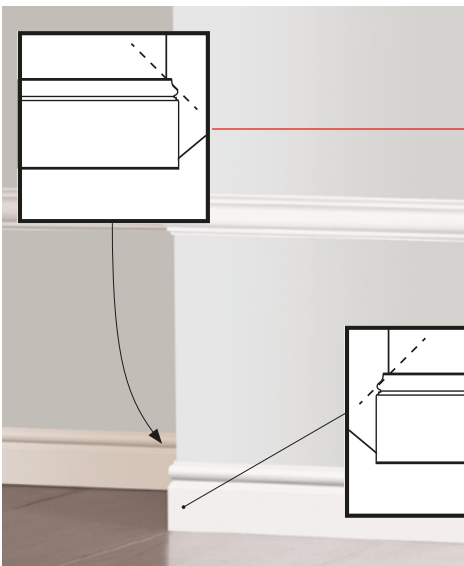
MITRING



2a Inside corner



2b Outside corner

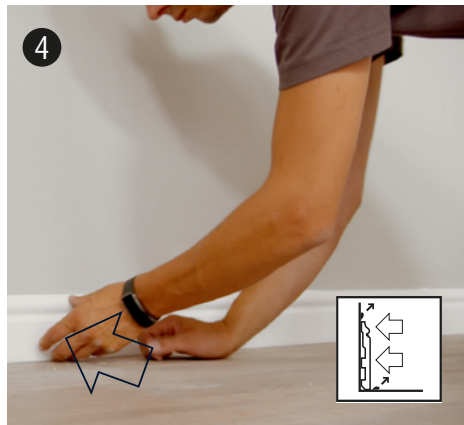


POSITION AND FINISH OFF

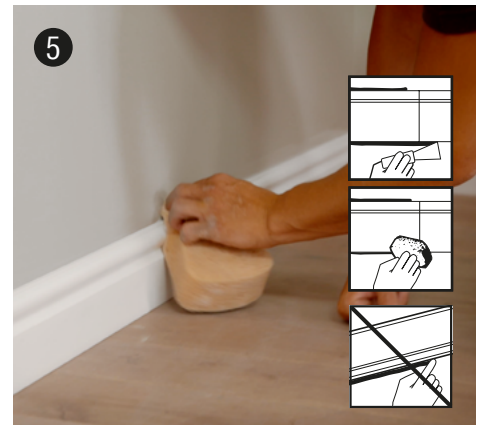


Apply DecoFix Pro or Power in V-Fix over the entire length
 | To apply an adequate quantity of DecoFix Pro or Power (see page 3), first take a stanley knife and trim the nozzle at 45deg allowing an application of at least 8mm diameter of adhesive. Use the V groove on the back of most moldings to guide the nozzle as you apply adhesive. Note the V groove will not stick if adhesive is only hidden within the V groove, the adhesive must overspill the indentation to work.

For cover baseboard: use DecoFix Power



Push firmly | Put the molding into place, checking that it is horizontal. When you are confident it is positioned correctly, press the entire length of the backboard to the wall.



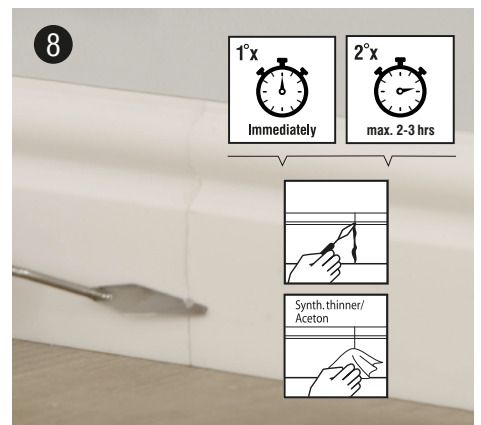
Cleaning overspill | Any overspill of DecoFix Pro can easily be removed with water. Any overspill of DecoFix Power can easily be removed with water and soap.



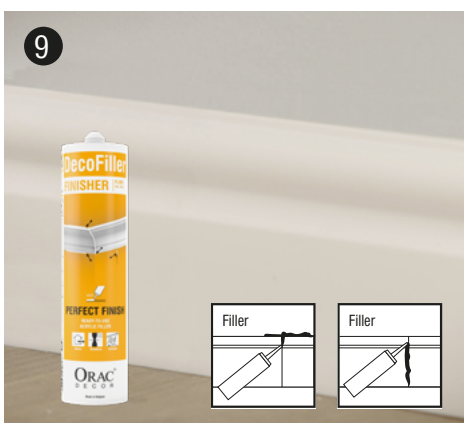
Use DecoFix Extra on every joint | Apply a generous amount of DecoFix Extra adhesive to each end of the molding and ensure both ends are completely covered. Read safety instructions on cartridge.



Push firmly and securely into the joint. The adhesive must come out all over the joint.



Clean | Wipe off the residue immediately so that it is flush with the molding. You can repeat this process one hour later. Use a cloth dipped in pure acetone to remove adhesive residue.



Use DecoFiller to smooth out the visible joints | If there are minor irregularities on your baseboard these can be filled with our FL300. You might find it easier to do this 24 hours after the initial installation.



Decorating! All Orac Decor[®] moldings are pre-primed in white, but still need to be painted over with a suitable paint. (after 24 hours). **No sanding required for our skirting in Duropolymer[®].**

We also have 6 references pre-finished with RAL9003.